



Welcome to 2018!

ArtCondo is a NYC resource for artists, creative-business owners & all culture workers! Created and run by artists, ArtCondo knows real estate and the types of spaces creative people need to create and lead productive lives. By using professional real estate strategies, ArtCondo is working to help Creative Workers and Thinkers in all disciplines achieve their real estate goals and gain equity, so they can stay in NYC.

New real estate models - including collective purchasing, co-housing, limited equity, co-ownership and timeshares - are being explored to help more creatives purchase and own space.

We are developing needed resources to share with our growing community, so stay tuned!

Look Forward to Meeting You in 2018!

If interested in purchasing in NYC, [click here to take ArtCondo's Survey.](#)

---

## MARK YOUR CALENDARS

JOIN US at ArtCondo's Monthly Informational + Networking Session - Including Special Presentation about Mixed Use Properties!

**WHEN:** Wednesday, February 7th @ 7 PM

**WHERE:** 64 West 21st Street, NY NY 10010 BOND NY Chelsea Office, back conference room

**WHAT:**

- Overview of ArtCondo's conceptual foundations
- Special Presentation about Mixed Use Properties
- Update on ArtCondo's Bronx Development!
- Q&A

## OTHER EVENTS

- February 21-24, 2018
  - ArtCondo Panel Discussion "A Room of One's Own: National Models of Housing for Artists Spaces and Artists Housing" at the College Art Association in Los Angeles
- Your Interest in Space or Purchasing!
- Community Announcement
  - January 26, 7:30 p.m.
  - GLASS FARM ENSEMBLE of roses
  - Location: Symphony Space Broadway and 95th Street, New York

Wednesday, February 7, 2018, 7:00 pm - 9:00 pm

Special Presentation about Mixed Use Buildings: "What are Mixed-Use Buildings? Why Are they Especially Good for Creative Workers?"



February 21-24, 2018

ArtCondo will be chairing a Panel Discussion entitled "A Room of Ones Own: National Models of Housing for Artists Spaces and Artists Housing" at the College Art Association's Annual Conference, taking place February 21-24, 2018, in Las Angeles! Speakers will include Keith McNutt from the Actors Fund, Barbara Broughel of Co-Habitat Project, and Scott Pfaffman, of Kaplan Houses for Artist Retirement. [Click here for more information.](#)



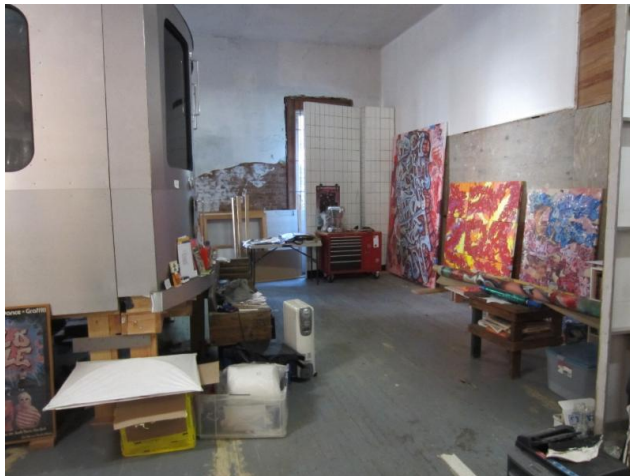
---

## FOR RENT

### RAW SPACE in Bronx for work or live/work!

5,500 sq. ft for \$6, 500, 3- 0 year lease. Division of space possible for small increase. Has water, heat, many windows, bathrooms. No elevator (2nd floor location). Super landlord looking for solid tenants. January lease-started. Can be rented to one person, a group of artists, or be split into large parts, depending on situation. Ten blocks from subway at 149th Street and 3rd Ave, Bronx. 5 minute bus ride or 10 minute walk from subway.

Please send email to [ArtCondo2013@gmail.com](mailto:ArtCondo2013@gmail.com) with your interest.



---

## GLASS FARM ENSEMBLE presents of rose

Friday, January 26, 2018, 7:30 p.m. Leonard Nimoy Thalia at Symphony Space Broadway and 95th Street. New York Tickets \$25, Students/Seniors \$20. [Click here for more information.](#)

Webside: [www.glassfarm.org](http://www.glassfarm.org)

Phone: 212.244.6422

Laura Cocks, Flute  
Greg Weissman, Oboe  
Leah Asher, Viola

Yvonne Troxler, Piano/Toy Piano

The GLASS FARM ENSEMBLE presents new music for flute, oboe, viola, piano and toy piano. The ensemble will give two US premieres: IAN WILSON'S SPILLIAERT'S BEACH for viola and piano, and DENIS SCHULER'S MYN for flute, oboe, viola and toy piano.

LOUIS ANDRIESSEN'S THE MEMORY OF ROSES is a moving, poetic ballad for toy piano and grand piano. A great contrast to this is the virtuoso PRESTO for flute and piano by BEAT FURRER. With WILLY BURKHARD'S CANZONA for viola and piano, and LARS WERDENBERG'S NOTTURNI for viola solo we return to the rather poetic and expressive language from the beginning.



---

Please keep ArtCondo in mind for all of your real estate needs! If you are interested in purchasing, selling, or renting your space and thinking about a condo, coop, townhome or large commercial building for yourself or your creative business, please check in!

We are happy to discuss and give free consultation!

ArtCondo founder, Michele Gambetta, is a licensed New York State real estate agent at BOND NY, specializing in helping creatives and creative-industry businesses achieve long term space goals, and gaining equity – a means of production! The needs and qualifications of culture workers are often different and more challenging than those of people with fulltime 1099 jobs.

Using her professional knowledge of NYC's real estate and financing industries, Michele works with creatives to find the unique inventories they need, and positioning themselves to qualify for them.

**Contact Michele Gambetta directly at  
646-245-9801 / [ArtCondo2013@gmail.com](mailto:ArtCondo2013@gmail.com)**

---

**[Click here to take ArtCondo's Survey.](#)**

**Art Condo LLC** is a Brooklyn-based community-focused real estate initiative created to help

creative professionals purchase and develop buildings throughout the NYC area in partnership with neighborhood residents. We are working to help artists, arts non-profits and art-related businesses purchase commercial and live/work spaces. Additional information is available on our website [www.ArtCondo.com](http://www.ArtCondo.com).



**Purchase workspace in NYC.**

Learn more at [www.ArtCondo.com](http://www.ArtCondo.com).

**ART**  
CONDO



Make sure to follow us on Facebook and Twitter.  
Click on the icons above.

---

**ART**  
CONDO

ArtCondo LLC is Brooklyn-based community-focused real estate initiative created to help creative professionals purchase and develop buildings throughout the NYC area, in partnership with neighborhood residents. We are working to help artists, arts non-profits and arts businesses purchase commercial spaces to work in residential town homes to live in. Our upcoming non-profit, the ArtCondo Foundation, will provide artists, arts organizations and other cultural stakeholders across disciplines with lower-cost / subsidized working spaces for teaching and making art, theatre, dance, photography, green roofs, and other creative enterprises across NYC's five boroughs. Additional information is available on our website [www.ArtCondo.com](http://www.ArtCondo.com).



[www.bondnewyork.com](http://www.bondnewyork.com)